

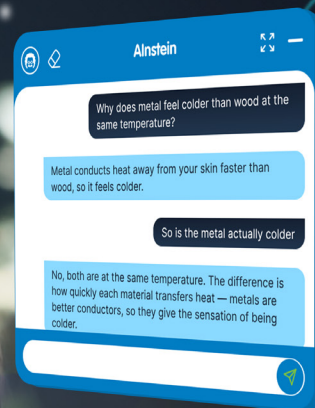
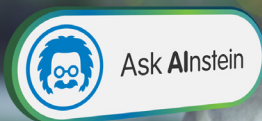


ASK Einstein

AI Chat Assistant

Integrated into MiLABEx

Empowering science learning with intelligent, real-time guidance, from anywhere, in multiple languages!



Ask Einstein



What is Ask Einstein?

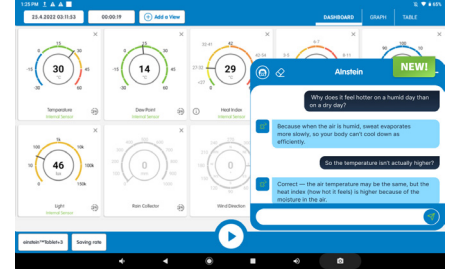
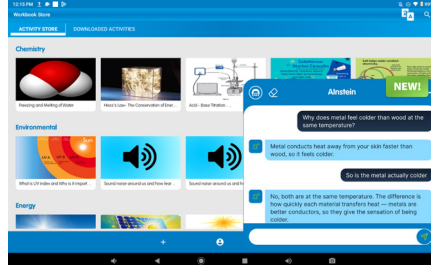
Ask Einstein is an AI chat assistant embedded directly into the **MiLABEx** software.

It supports students during hands-on science learning by providing instant explanations, guidance, and insights across all three sub-apps of the **MiLABEx** software: the **Lab**, **Workbook** and **Weather Station**.



How Ask Alnstein is used across the sub-apps:

Ask Alnstein is built in all three **MiLABEx** sub-apps, serving as a science assistant that provides explanations and insights related to the topics explored in each environment:



In Lab

It answers science-related questions that help users understand the principles of science experiments.



In Workbook


it explains science concepts and terms to deepen student understanding.



In Weather Station

It helps users expand their understanding of weather and climate phenomena

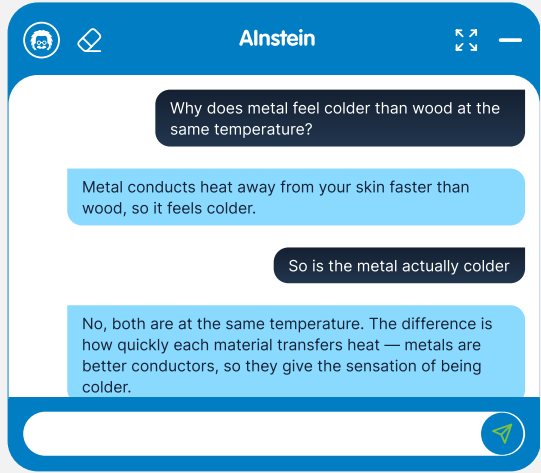
How to start a chat with the Ask Alnstein:

1  **Ask Alnstein**

Click the **Ask Alnstein** button at the bottom right corner of the **MiLABEx** screen.

2

Type a science-related question (available in multiple languages).

3 

Get instant explanations, insights, and guidance – directly within the app.

Sample questions students can ask:

Why does metal feel colder than wood at the same temperature?

What happens to the rate of photosynthesis when light intensity increases?

Why does condensation form on a cold drink?

Why does it feel hotter on humid days?

How does air pressure affect the weather?

How Ask Alnstein supports learning:

- Encourages inquiry-based learning by letting students ask their own questions.
- Provides instant feedback and explanations within the learning environment.
- Enhances scientific understanding through contextual, real-time guidance.
- Supports independent learning and student curiosity.
- Reduces teachers' need to pause lessons to explain individual questions.

Available on all platforms:



einstein Tablet



einstein LabMate

(connected to any screen device)



Desktop computers

(Windows and macOS)



Mobile devices

(Android and iOS)

Ask Alnstein represents the next step in the evolution of the einstein platform, combining AI with hands-on science learning to make education more interactive, accessible, and engaging. Use Ask Alnstein anywhere: in the classroom, outside, or at home, in any language.



Teach Science!

Fourier was named one of the World's Top EdTech Companies 2025 by TIME magazine in partnership with Statista.



Learn more about the einstein™ www.einsteinWorld.com
ALBERT EINSTEIN and/or EINSTEIN are trademarks or registered trademarks of The Hebrew University of Jerusalem, represented exclusively by CMG, and are used with permission. Official licensed merchandise. All rights reserved.